

3M™ Wheels

Scotch-Brite™ Unitized Wheels

Scotch-Brite™ EXL Unitized Deburring Wheels

Excellent for deburring and polishing a wide range of metals, plastics and composites.

- Cool running allows more pressure to be applied
- Cleaner than buffs and compounds

Dia x W x AH	Grade	Max RPM	UPC	Qty./ Case	List Price
1" x 1" x 3/16"	2AMED	25,100	048011-15527-2	50	2.90
	2SFIN	30,100	048011-13713-1	50	2.90
	6AMED	35,100	048011-14063-6	50	3.41
	8AMED	35,100	048011-13753-7	50	3.78
	8ACRS	35,100	048011-13752-0	50	3.78
3" x 1/4" x 3/8"	2AMED	12,100	048011-16054-2	40	5.12
	2SFIN	12,100	048011-14750-5	40	5.12
	4AFIN	18,100	048011-14751-2	40	5.48
	6AMED	18,100	048011-15118-2	40	6.02
	6SFIN	18,100	048011-14752-9	40	6.02
	8AMED	18,100	048011-14753-6	40	6.69
	8ACRS	18,100	048011-13766-7	40	6.69
6" x 1/2" x 1"	2SFIN	5,000	048011-14379-8	4	27.34
	2A MED	4,500	048011-16545-5	4	27.34
6" x 1" x 1"	2SFIN	5,000	048011-13743-8	2	48.60
	2A MED	4,500	048011-16544-8	2	48.60

For 1", use Mandrel No. 936 or 946
For 3", use Mandrel No. 990

Accessories

Mandrels



Mandrel No. 936



Mandrel No. 990

Designed for use with Scotch-Brite™ Unitized Wheels.

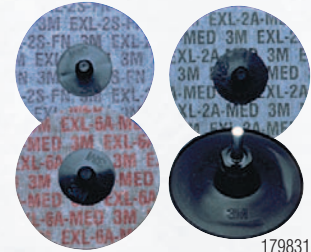
L x Shaft Dia x Washer Dia	Mandrel No.	UPC	Qty./ Case	List Price
2-1/16" x 1/4" x 3/4" Plastic Max RPM 22,200	936	048011-04018-9	5	4.88
1-3/4" x 1/4" Plastic Max RPM 18,200 with 3" wheel	990	048011-15012-3	5	15.74



51730

Scotch-Brite™ Roloc™ EXL Unitized Wheels

Strong, efficient products for edge deburring and finishing. Used with 3M™ Roloc™+ holder pads on a straight shaft or right-angle tool.



179831

Dia	Grade	UPC	Qty./ Case	List Price
2"	6A MED	048011-17190-6	60	3.54
	2A MED	048011-17185-2	60	3.00
	2SFIN	048011-17183-8	60	3.00
3"	6A MED	048011-17191-3	40	6.44
	2A MED	048011-17186-9	40	5.48
	2SFIN	048011-17184-5	40	5.48

3M™ Roloc™+ Holder

Plastic holder for use with 3M™ Roloc™ Unitized Wheels.



51732

L x Shaft Dia	UPC	Qty./ Case	List Price
1" x 1/4" Max RPM 25,000	048011-15408-4	5	11.80

Scotch-Brite™ Convolute Wheels

Scotch-Brite™ EXL Deburring Wheels

Use to clean, finish, blend, deburr or polish all types of metals, composites and glass.

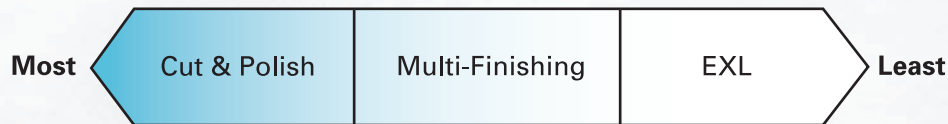


14497

Wheels
Scotch-Brite™ Convolute

Dia x W x AH	Grade	UPC	Qty./Case	List Price
6" x 1/2" x 1" Max RPM 6,000	8A MED	048011-13616-5	4	38.00
	8S FIN	048011-09548-6	4	38.00
	9S FIN	048011-05790-3	4	38.00
6" x 1" x 1" Max RPM 6,000	8A MED	048011-13617-2	3	53.21
	8S FIN	048011-09549-3	3	53.21
	9S FIN	048011-05132-1	3	53.21
8" x 1/2" x 3" Max RPM 4,500	8A MED	048011-17459-4	4	45.22
	8S FIN	048011-14629-4	4	45.22
	9S FIN	048011-05791-0	4	45.22
8" x 1" x 3" Max RPM 4,500	8A MED	048011-13619-6	3	66.55
	8S FIN	048011-09551-6	3	66.55
	9S FIN	048011-05135-2	3	66.55
8" x 2" x 3" Max RPM 4,500	8A MED	048011-13620-2	2	116.03
	8S FIN	048011-09552-3	2	116.03
	9S FIN	048011-05136-9	2	116.03

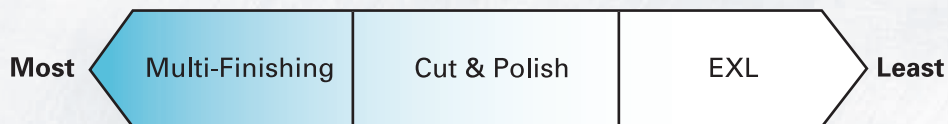
Aggressiveness



Hardness



Finish

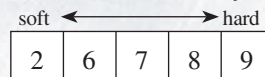


A prefix denotes the mineral in the product (e.g., AFIN):

A = Aluminum Oxide mineral

S = Silicon Carbide mineral

When a number appears, this denotes the density of the product (e.g., 2 SMED)



Scotch-Brite™ Convolute Wheels (cont.)



241317

Scotch-Brite™ SF Finishing and Deburring Wheels

When your main task is finishing but you know you have some burrs.

- Fast, consistent and easy on operators
- Finish all types of metals, composites and glass

Dia x W x AH	Grade	UPC	Qty./Case	List Price
6" x 1/2" x 1" Max RPM 6,000	8SFIN	048011-33174-4	4	35.72
	8SMED	048011-33184-3	4	35.72
6" x 1" x 1" Max RPM 6,000	8SFIN	048011-33182-9	3	50.01
	8SMED	048011-33185-0	3	50.01



51737

Scotch-Brite™ Cut & Polish Wheels

Heavy-duty wheels for aggressive blending and finishing.

- Produce uniform results quickly and easily
- Replace rubber bonded wheels, set-up wheels and flap wheels

Dia x W x AH	Grade	UPC	Qty./Case	List Price
6" x 1" x 1" Max RPM 6,000	7AMED	048011-03262-7	3	94.78
	7AFIN	048011-03270-2	3	94.78



51736

Scotch-Brite™ Multi-Finishing Wheels

Produces uniform grain finishes on stainless steel and other metals.

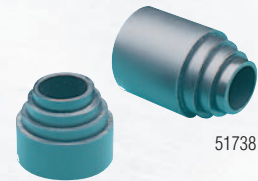
- Highly conformable
- Tough enough to finish edges and welds

Dia x W x AH	Grade	UPC	Qty./Case	List Price
6" x 1" x 1" Max RPM 6,000	2SCRS	048011-13170-2	3	31.54
	2SMED	048011-13171-9	3	31.54
	2SFIN	048011-13172-6	3	31.54
6" x 2" x 1" Max RPM 6,000	2SCRS	048011-13176-4	2	52.25
	2SMED	048011-13177-1	2	52.25
	2SFIN	048011-13178-8	2	52.25
8" x 1" x 3" Max RPM 4,500	2SCRS	048011-13182-5	3	49.56
	2SMED	048011-13183-2	3	49.56
	2SFIN	048011-13184-9	3	49.56
8" x 2" x 3" Max RPM 4,500	2SCRS	048011-13185-6	2	77.34
	2SMED	048011-13186-3	2	77.34

Accessories — Wheels

Flange Adapter No. 5

For use with 6" wheels. Telescoping wheel adapters 1" and 1/2" wide to reduce 1" wheel cores to fit 5/8". Must be used with side flanges.



51738

OD x W x ID	UPC	Qty./Case	List Price
1" x 1/2" x 1/2"	048011-16859-3	5 Pair	3.70/ Pair
1" x 1" x 1/2"	048011-16860-9	5 Pair	4.23/ Pair